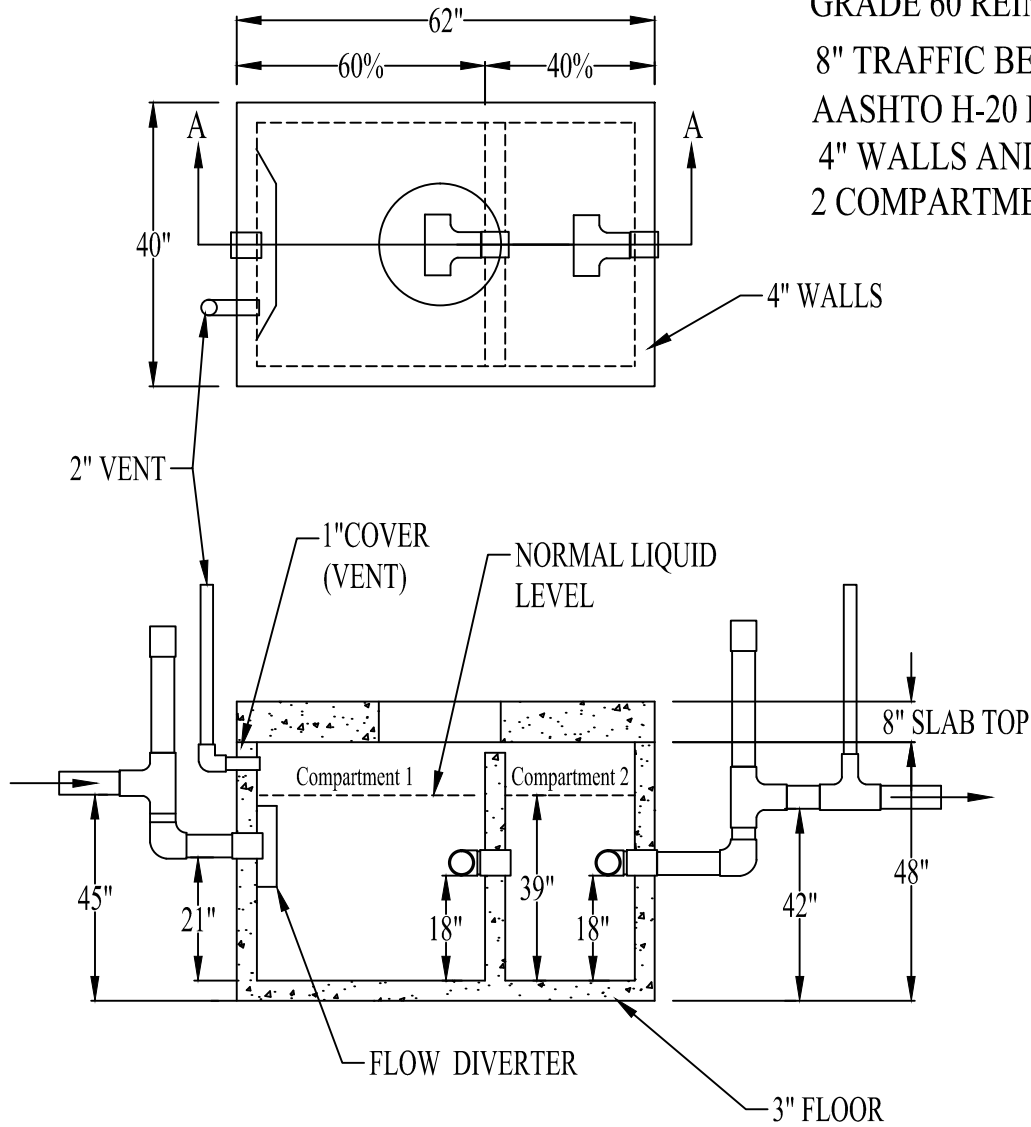


# 250 GAL. GREASE INTERCEPTOR

## STANDARD FEATURES:

- 5000 PSI CONCRETE
- GRADE 60 REINFORCING
- 8" TRAFFIC BEARING LID
- AASHTO H-20 RATED
- 4" WALLS AND 3" FLOOR
- 2 COMPARTMENTS STANDARD



SECTION A-A

## NOTES:

- ALLOW FOR MANHOLE AND COVER IN TOTAL HEIGHT.
- STANDARD INLET/OUTLET FITTINGS ARE 4" BOOT (6" AVAILABLE)



CAPITAL PRECAST, INC.

6905 SOUTH OLD BASTROP HWY  
SAN MARCOS, TEXAS 78666  
PH. (830) 606-6200

FOR 250 Gal. Grease Interceptor

JOB

DRAWN

DK

DATE

04/19/18

Rev. No.

05/29/18

SHEET

1 OF 1

FILE

RemovableDisk(G:)/250 Gal GI.dwg