

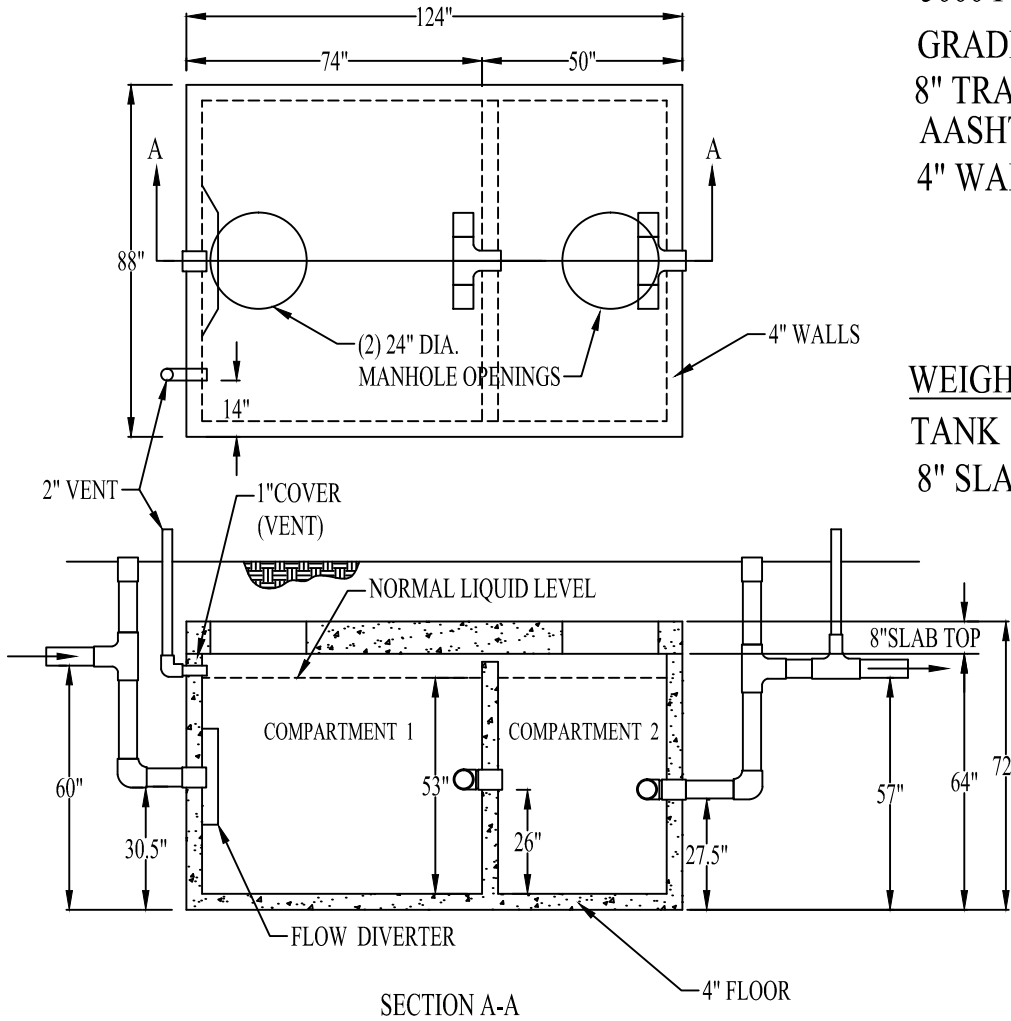
# 2000 GALLON GREASE INTERCEPTOR

## STANDARD FEATURES:

- 5000 PSI CONCRETE
- GRADE 60 REINFORCING
- 8" TRAFFIC BEARING LID
- AASHTO H-20 RATED
- 4" WALLS AND FLOOR

## WEIGHT (APPROXIMATE):

TANK	14,650 LBS
8" SLAB TOP	7,535 LBS



## NOTES:

- ALLOW FOR MANHOLE AND COVER IN TOTAL HEIGHT.
- STANDARD INLET/OUTLET FITTINGS ARE 4" BOOT (6" AVAILABLE)
- MAXIMUM BURY DEPTH TO BOTTOM OF TANK: 10 FT.



CAPITAL PRECAST, INC.

6905 SOUTH OLD BASTROP HWY  
 SAN MARCOS, TEXAS 78666  
 PH. (830) 606-6200

FOR 2000 Grease Interceptor

JOB

DRAWN

DK

DATE

06/15/17

Rev. No.

02/07/20

SHEET

FILE

RemovableDisk(G:)/2000GI.dwg

1 OF 1