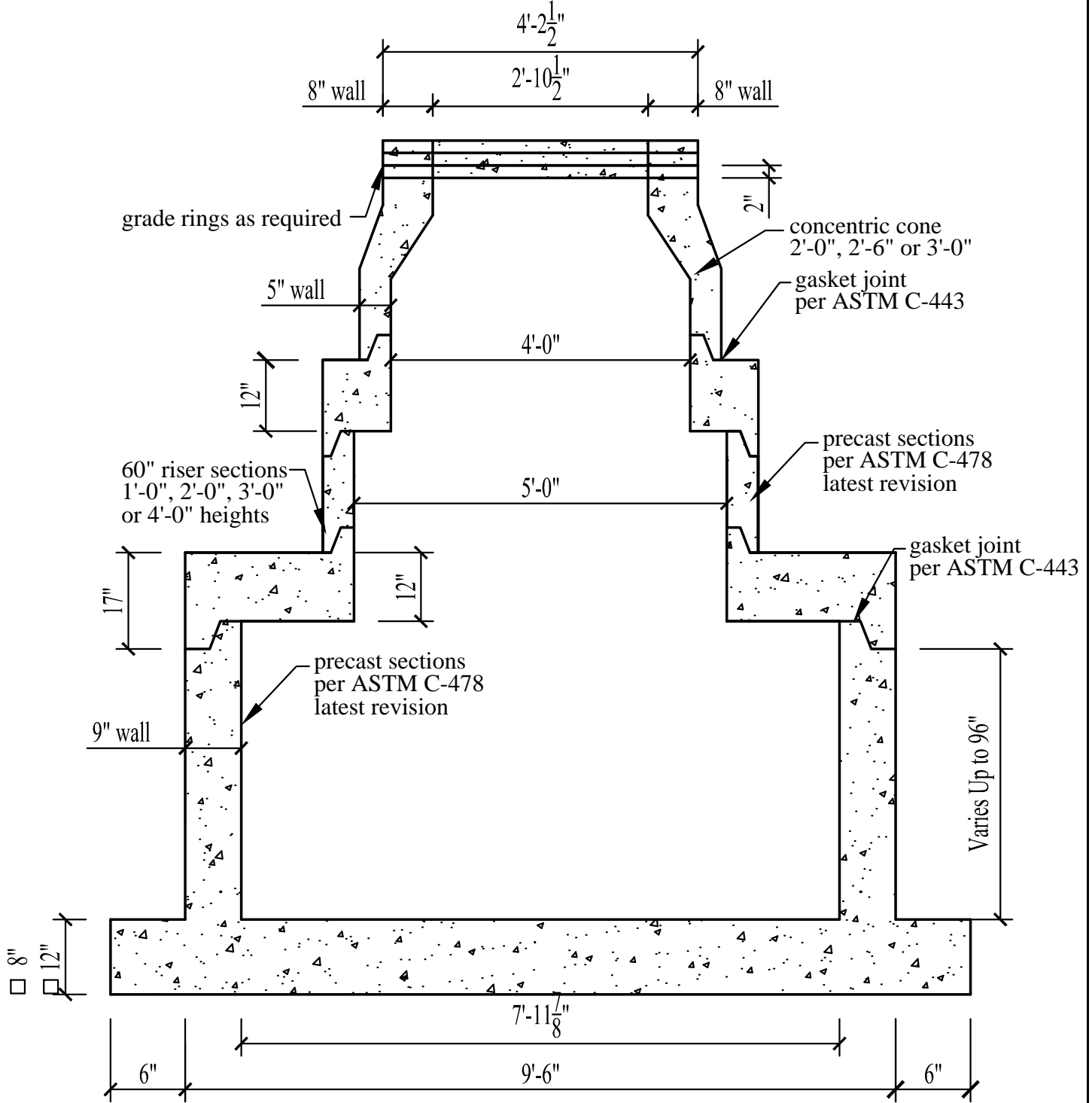


96" / 60" / 48" Precast Manhole with Extended Base



Specifications:

- Concrete has a 28 day strength of 5,000 psi
- Steel reinforcement is ASTM A615 grade 60
- Load design is H-20

Notes:

- Consult manufacturer before handling



CAPITAL PRECAST, INC.

6905 SOUTH OLD BASTROP HWY
 SAN MARCOS, TEXAS 78666
 PH. (830) 606-6200

FOR 96"/60"/48" Precast Manhole with Precast Ext. Base

JOB

DRAWN

RW

DATE

9/27/2016

Rev. No.

SHEET

FILE

catalog/sanitary/96/60/48ManholewithExt.Base

1 OF 1