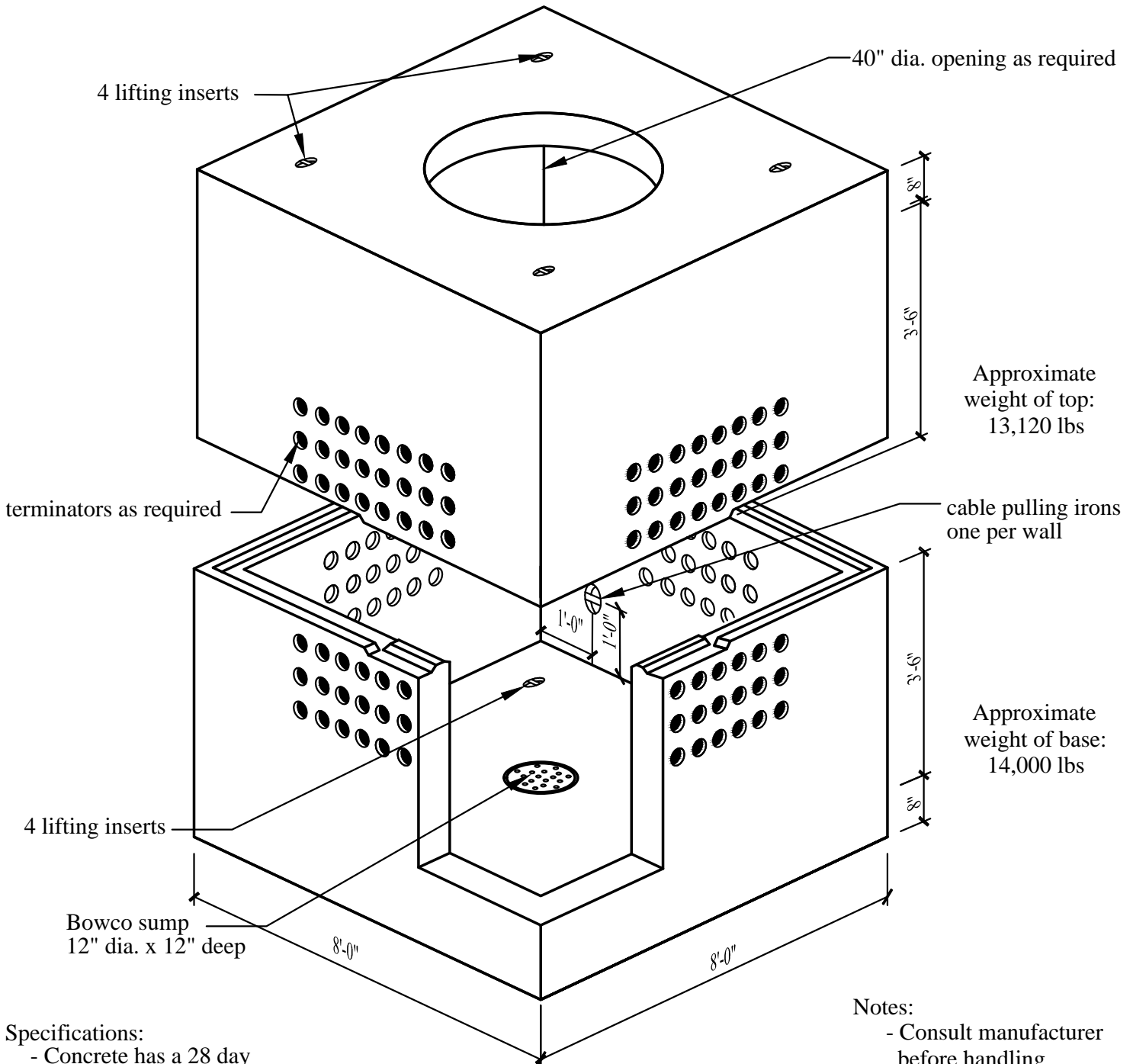


# CPS Electrical Vault

## 7' x 7' x 7'



Approximate weight of top:  
13,120 lbs

Approximate weight of base:  
14,000 lbs

- Specifications:**
- Concrete has a 28 day strength of 5,000 psi
  - Steel reinforcement is ASTM A615 Grade 60

- Notes:**
- Consult manufacturer before handling
  - 6x8 array of 3" conduit front and back walls; or as needed



**CAPITAL PRECAST, INC.**

6905 SOUTH OLD BASTROP HWY  
SAN MARCOS, TEXAS 78666  
PH. (830) 606-6200

FOR		7' x 7' x 7' Electrical Vault - CPS		
JOB				
DRAWN	RW	DATE	12/1/2015	Rev. No.
FILE				catalog/elec.comm vault/7x7x7 Elec Vault - CPS
				SHEET <u>1</u> OF <u>1</u>