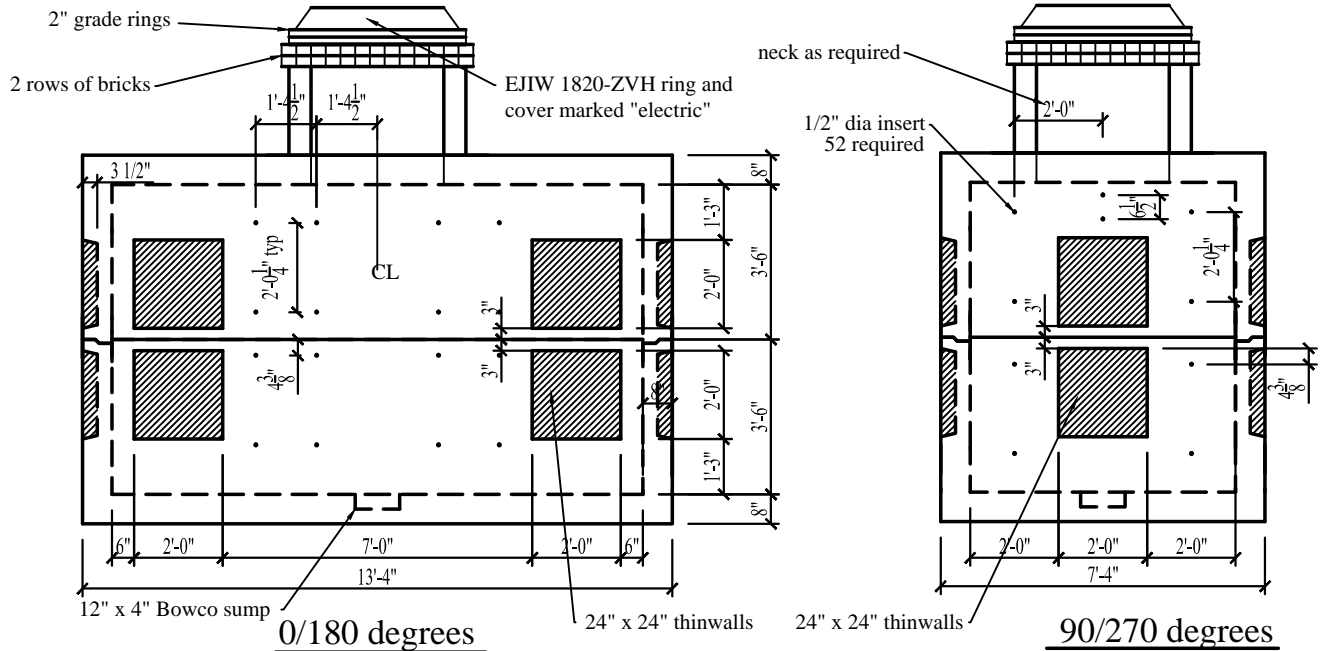
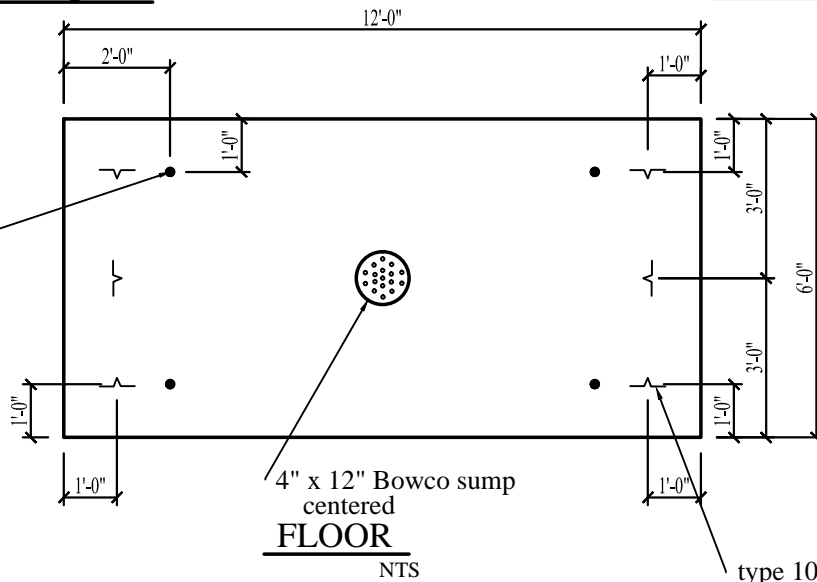


6' x 12' Austin Energy Electric



Conac 8CA18 lifters located as shown (4 typical)



type 102 galvanized pulling iron located as shown (6 typical)

Specifications:

1. Concrete has a 28 day strength of 5,000 psi.
2. Steel reinforcement is ASTM A615 Grade 60.

Notes:

1. Designed for H-20 bridge loading.
2. Top/bottom section weight approx. 19,000 lbs. ea.
3. Knockouts as required.
4. 36" manhole opening.
5. Sump 12" dia. x 4" deep (1) required.
6. (6) type 102 pulling irons required.
7. 1/2" dia. inserts (52 required).
8. (4) 8CA18 lifting anchors in top section.
9. (4) 8CA18 lifting anchors in bottom section.



CAPITAL PRECAST, INC.

6905 SOUTH OLD BASTROP HWY
 SAN MARCOS, TEXAS 78666
 PH. (830) 606-6200

FOR 6' x 12' Electric/Communication Vault - Austin

JOB

DRAWN

RW

DATE

12/1/2015

Rev. No.

SHEET

FILE

catalog/elec.comm vault/6x12 Elec.Comm Vault - Austin

1 OF 1