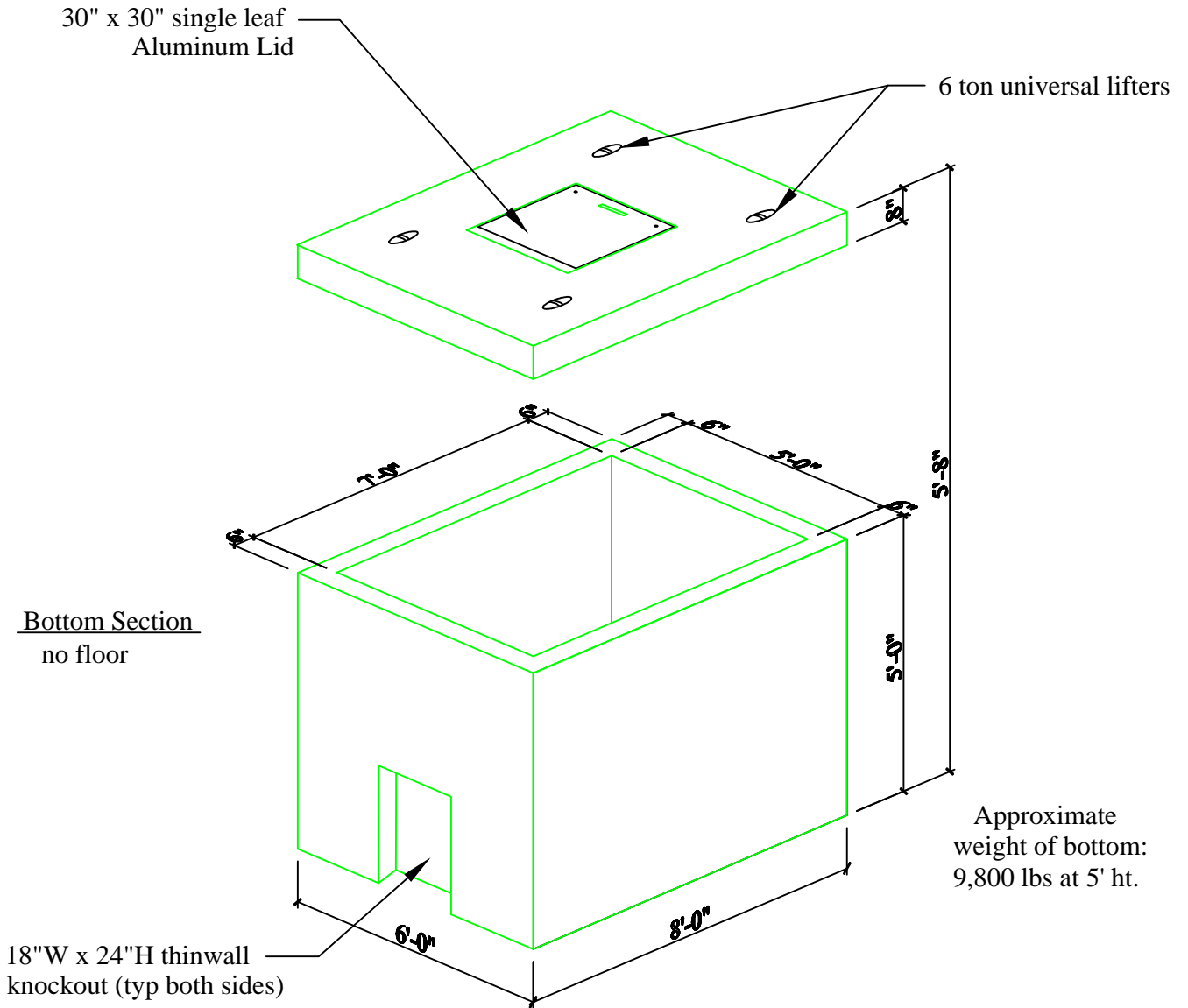


5' x 7' Meter Vault with 30" x 30" H20 Aluminum Lid



Specifications:

- Concrete has a 28 day strength of 5,000 psi
- Steel reinforcement is ASTM A615 Grade 60
- Load design is H-20

Notes:

- Consult manufacturer before handling

Typical Applications:

- City of Austin compound meter assembly - 3", 4" and 6"



CAPITAL PRECAST, INC.

6905 SOUTH OLD BASTROP HWY
 SAN MARCOS, TEXAS 78666
 PH. (830) 606-6200

FOR **5' x 7' Meter Vault**

JOB

DRAWN EJ

DATE 10/10/2016

Rev. No.

SHEET

FILE

catalog/vaults/5x7 Meter Vault

1 OF 1