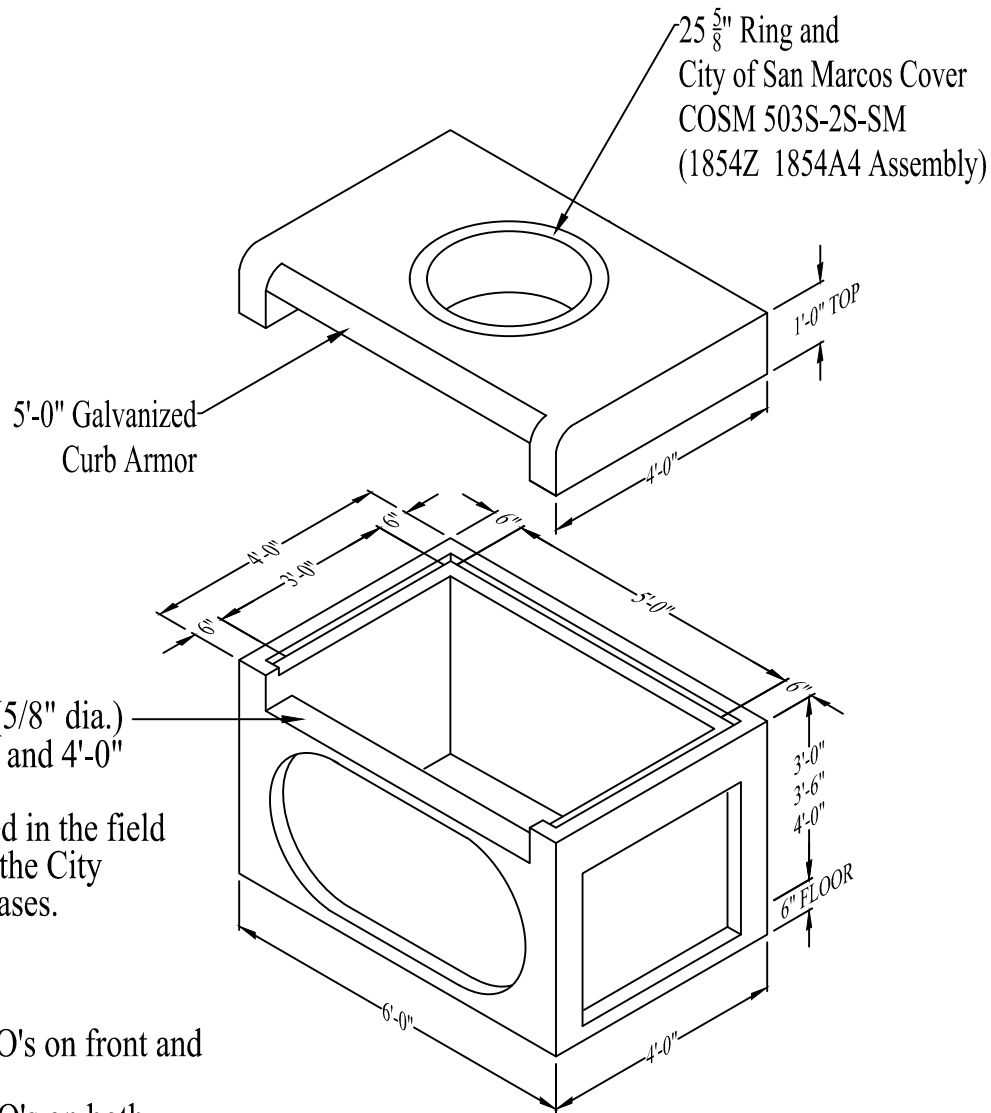


5' City of San Marcos Curb Inlet



Drill 6" deep holes (5/8" dia.) at 12" O.C. on 3'-6" and 4'-0" bases.
Holes shall be drilled in the field per the direction of the City Inspector on 3'-0" bases.

58"W x 30"H TWKO's on front and rear of 5'-0" inlets.

36"W x 30"H TWKO's on both end walls of 5'-0" inlets.

GENERAL NOTES:

All concrete to have 28 day compressive strength of 5000 psi.
Reinforcing steel shall comply with ASTM A615 Grade 60.
Bar bending and placement shall comply with latest ACI standards.
Design based on AASHTO HS 20-44 loading.

Consult manufacturer before handling.



CAPITAL PRECAST, INC.

6905 SOUTH OLD BASTROP HWY
SAN MARCOS, TEXAS 78666
PH. (830) 606-6200

FOR 5' City of San Marcos Curb Inlet

JOB

DRAWN DK DATE 07/31/19 Rev. No.

FILE Removable Disk(G:)/5City of SanMarcosC.I.dwg