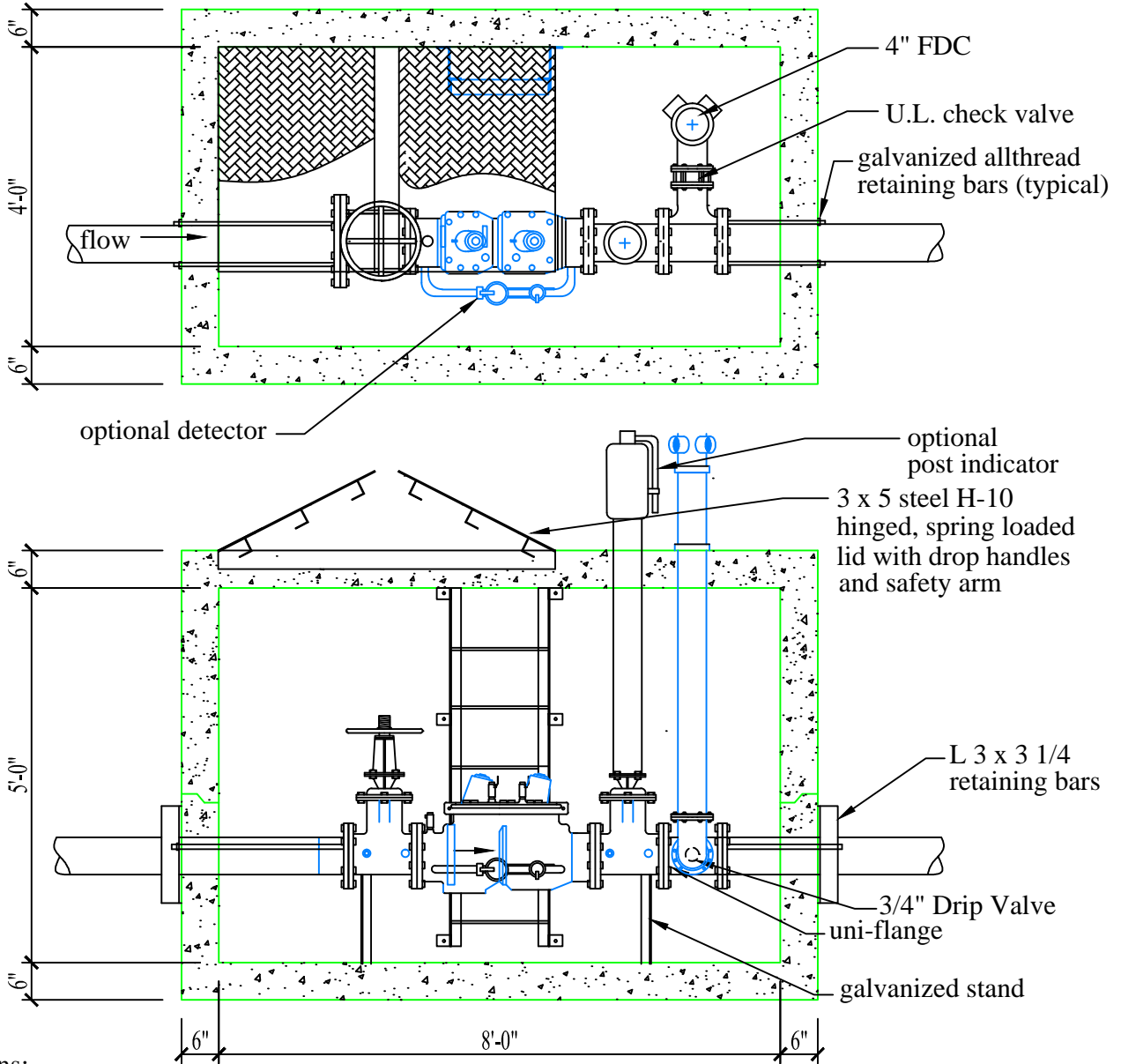


- 4" Double Check Assembly with FDC and Post Indicator
- 4" Double Check Detector Assembly with FDC and Post Ind.



- Specifications:
- Concrete has a 28 day strength of 5,000 psi
  - Steel reinforcement is ASTM A615 grade 60
  - Load design is H-20

- Notes:
- Consult manufacturer before handling



CAPITAL PRECAST, INC.

6905 SOUTH OLD BASTROP HWY  
 SAN MARCOS, TEXAS 78666  
 PH. (830) 606-6200

FOR 4" DC with FDC and Post Indicator

JOB

DRAWN	RW	DATE	12/1/2015	Rev. No.	SHEET
FILE	catalog/backflow assembly/4 dcwithfdcandpost				1 OF 1