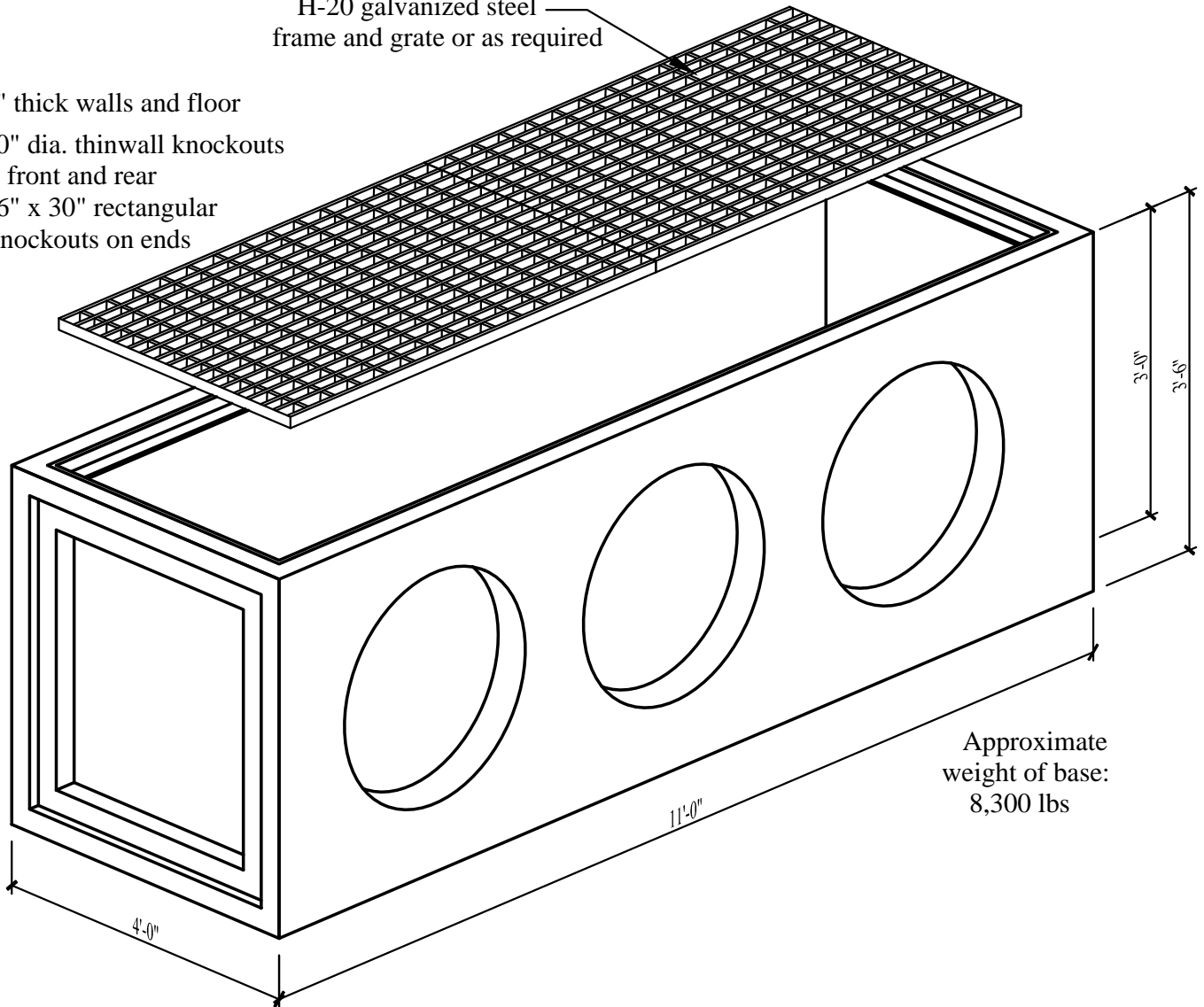


# 3' x 10' x 3' Grate Inlet

H-20 galvanized steel  
frame and grate or as required

- 6" thick walls and floor
- 30" dia. thinwall knockouts  
front and rear
- 36" x 30" rectangular  
knockouts on ends



Approximate  
weight of base:  
8,300 lbs

## Specifications:

- Concrete has a 28 day strength of 5,000 psi
- Steel reinforcement is ASTM A615 grade 60
- Load design is H-20

## Notes:

- Consult manufacturer before handling



CAPITAL PRECAST, INC.

6905 SOUTH OLD BASTROP HWY  
SAN MARCOS, TEXAS 78666  
PH. (830) 606-6200

FOR 3' x 10' x 3' Grate Inlet

JOB

DRAWN

RW

DATE

12/1/2015

Rev. No.

SHEET

FILE

catalog/grate inlets/3x10 Grate Inlet

1 OF 1