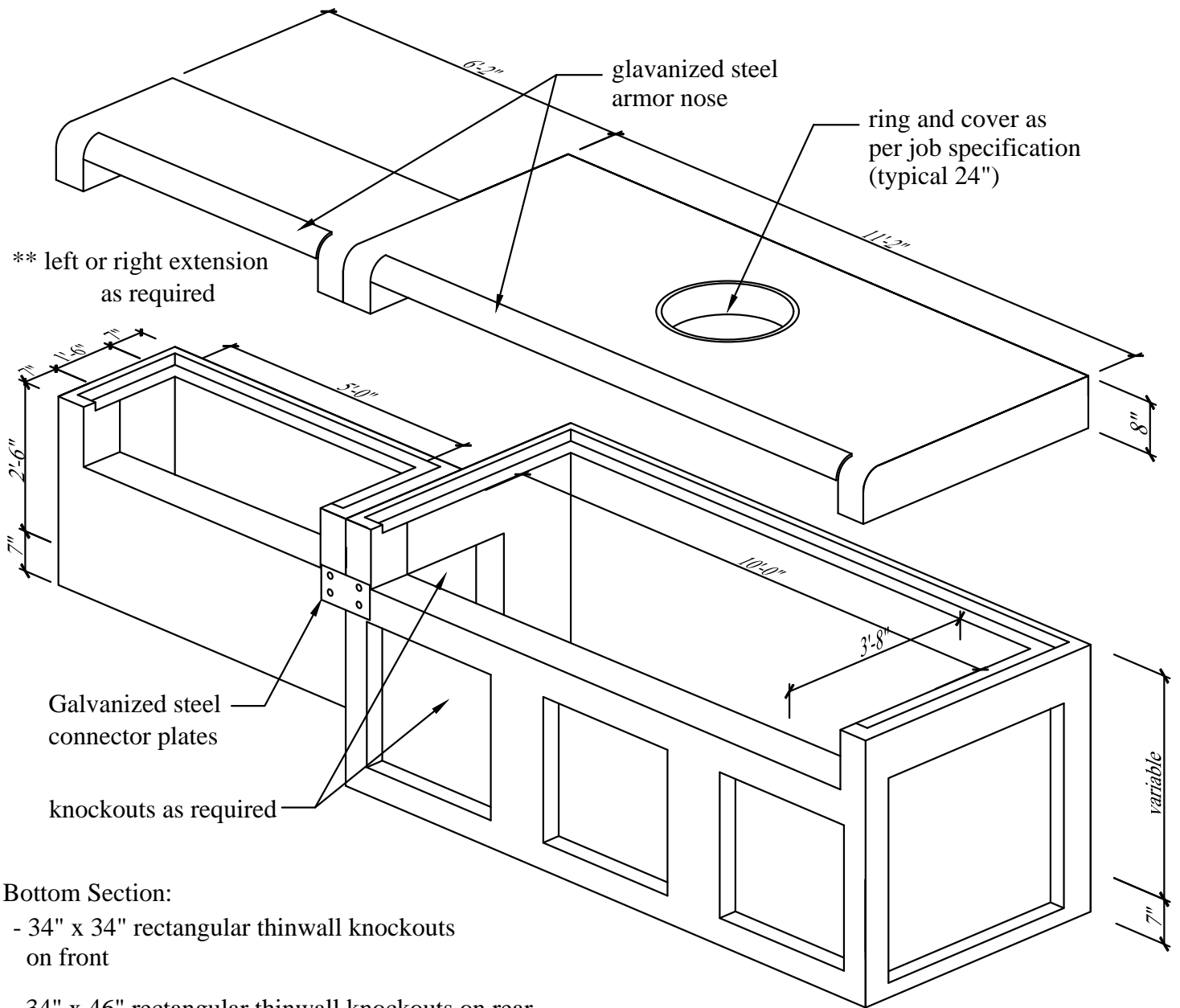


# 3'-8" x 10'-0" Type C-1 with 5'-0" Extension



## Bottom Section:

- 34" x 34" rectangular thinwall knockouts on front
- 34" x 46" rectangular thinwall knockouts on rear
- 44" x 48" rectangular thinwall knockouts on ends
- Riser sections available upon request
- Concrete has a 28 day strength of 5,000 psi
- Steel reinforcement is ASTM A615 grade 60
- Load design is H-20

Approximate weight of base: 12,800 lbs.

## Notes:

- Consult manufacturer before handling



CAPITAL PRECAST, INC.

6905 SOUTH OLD BASTOP HWY  
SAN MARCOS, TEXAS 78666  
PH. (830) 606-6200

FOR 3'-8" x 10'-0" Type C-1 with 5'-0" Extension

JOB

DRAWN

RW

DATE

9/26/2016

Rev. No.

SHEET

FILE

catalog/curbinlets/3'-8 x 10' Type C1 with 5' Ext

1 OF 1