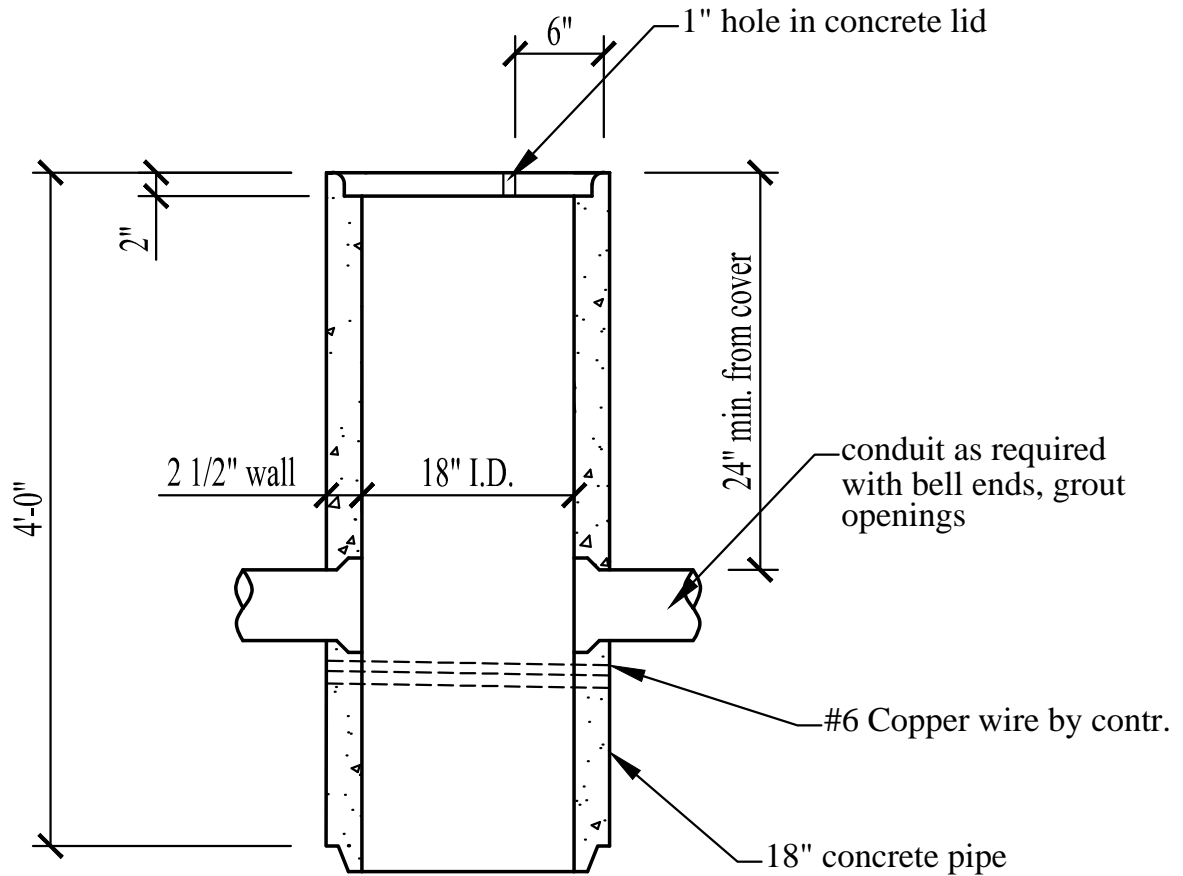


# 18" Pullbox (Non-Traffic)



## Specifications:

- Concrete has a 28 day strength of 5,000 psi
- Steel reinforcement is ASTM A615 Grade 60

## Notes:

- Consult manufacturer before handling



CAPITAL PRECAST, INC.

6905 SOUTH OLD BASTROP HWY  
SAN MARCOS, TEXAS 78666  
PH. (830) 606-6200

FOR 18" Pullbox (Non-Traffic)

JOB

DRAWN

RW

DATE

12/1/2015

Rev. No.

SHEET

FILE catalog/elec.comm vaults/18 Pullbox (Non-Traffic)

1 OF 1