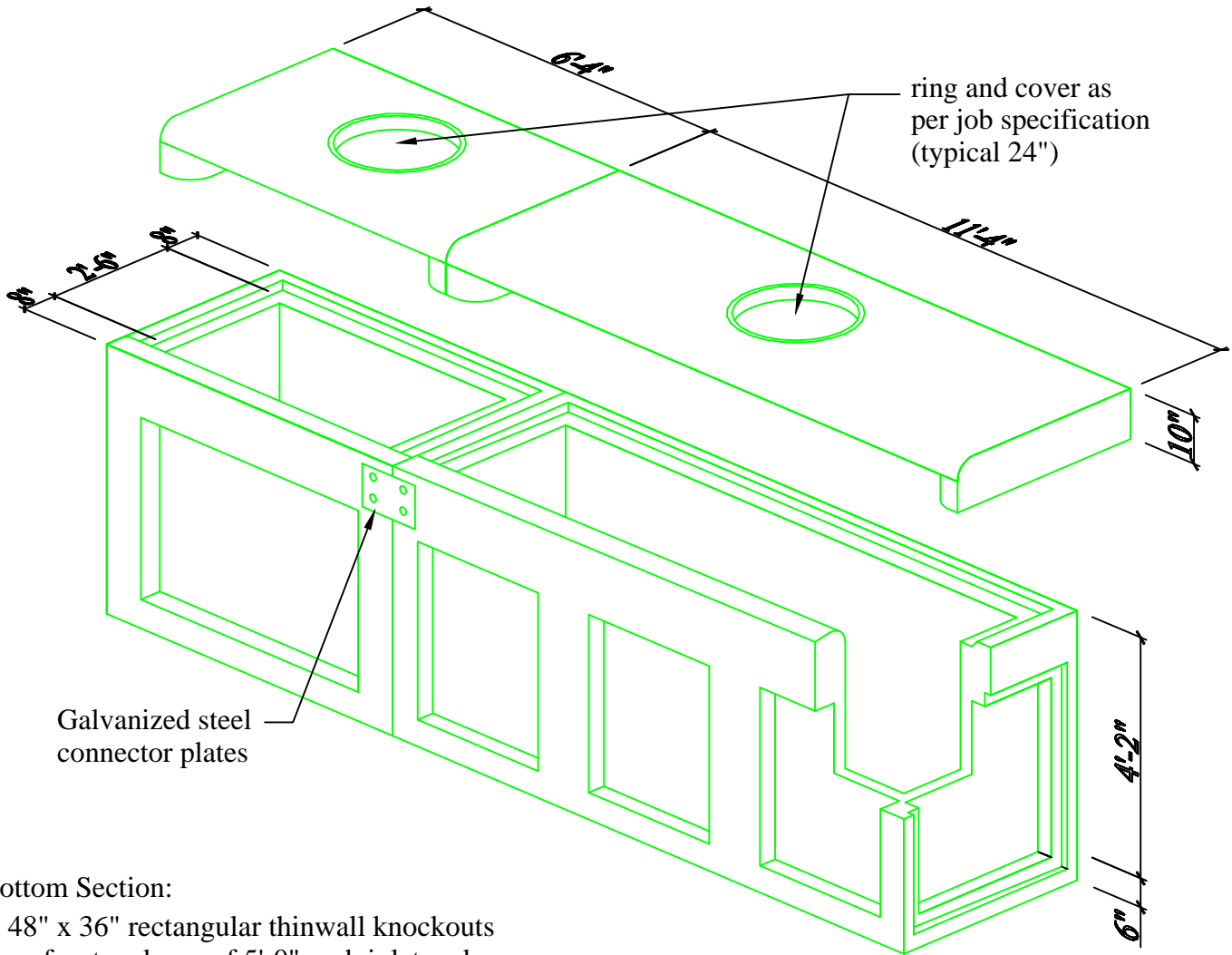


City of San Antonio 15' Curb Inlet with 5' Invert



Bottom Section:

- 48" x 36" rectangular thinwall knockouts on front and rear of 5'-0" curb inlet and 32" x 36" rectangular thinwall knockouts on front and rear of 10'-0" curb inlet
- 34" x 36" rectangular knockouts on all ends
- Riser sections available upon request
- Concrete has a 28 day strength of 5,000 psi
- Steel reinforcement is ASTM A615 grade 60
- Load design is H-20

Approximate weight of heaviest section:
11,640 lbs at 4'-2" height

Notes:
- Consult manufacturer before handling



CAPITAL PRECAST, INC.

6905 SOUTH OLD BASTROP HWY
SAN MARCOS, TEXAS 78666
PH. (830) 606-6200

FOR 15' Curb Inlet with 5' Invert - San Antonio

JOB

DRAWN

RW

DATE

12/1/2015

Rev. No.

SHEET

FILE

catalog/curbinlets/15' curb SA

1 OF 1