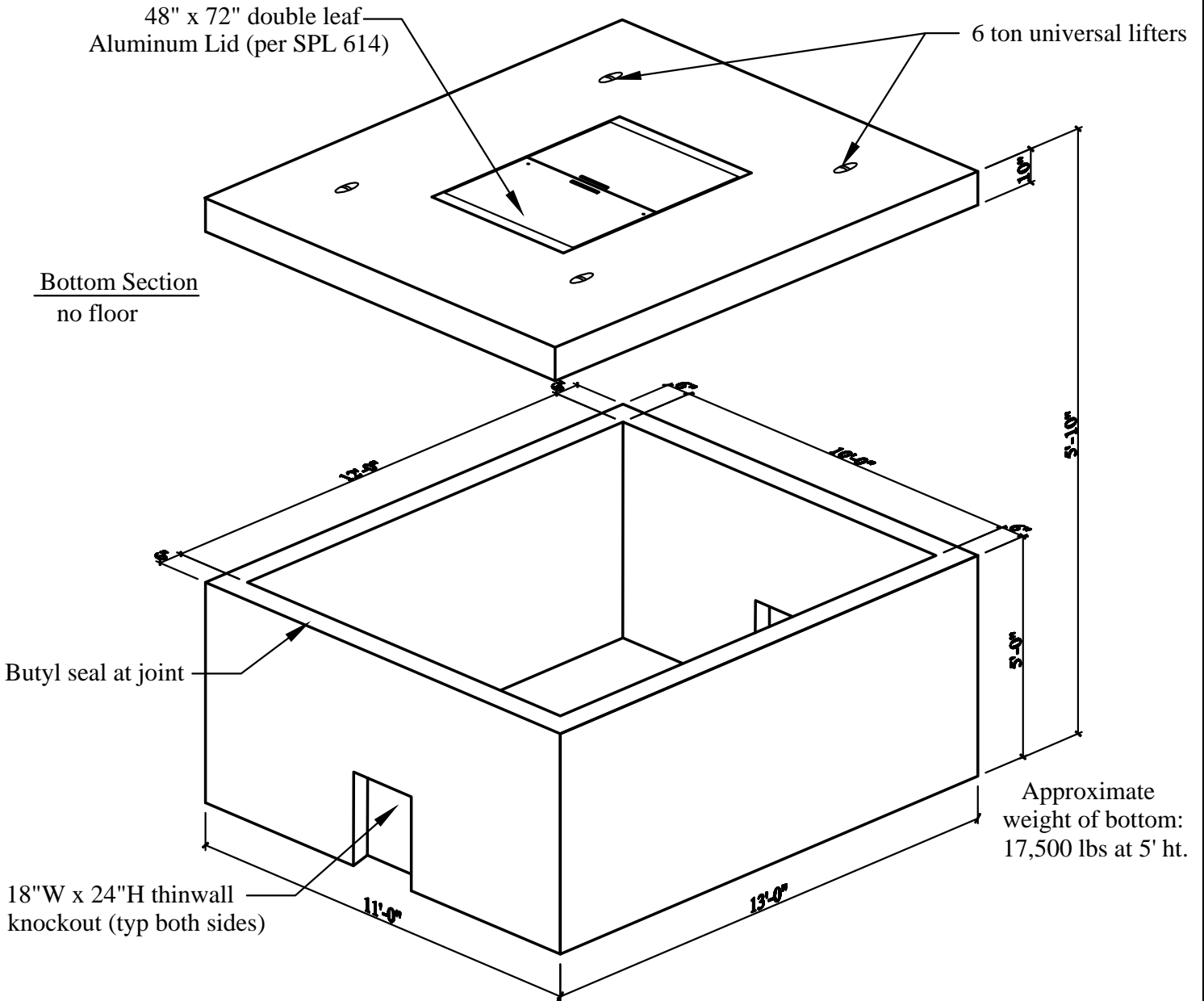


# 10' x 12' Meter Vault with 48" x 72" H2O Aluminum Lid (per Austin Specifications)



**Specifications:**

- Concrete has a 28 day strength of 5,000 psi
- Steel reinforcement is ASTM A615 Grade 60
- Load design is H-20

**Notes:**

- Consult manufacturer before handling

**Typical Applications:**

- City of Austin 8" fireline meter



**CAPITAL PRECAST, INC.**

6905 SOUTH OLD BASTROP HWY  
SAN MARCOS, TEXAS 78666  
PH. (830) 606-6200

FOR 10' x 12' Meter Vault - Austin

JOB

DRAWN RW

DATE 12/1/2015

Rev. No.

SHEET

FILE

catalog/vaults/10x12AustinMeterVault

1 OF 1