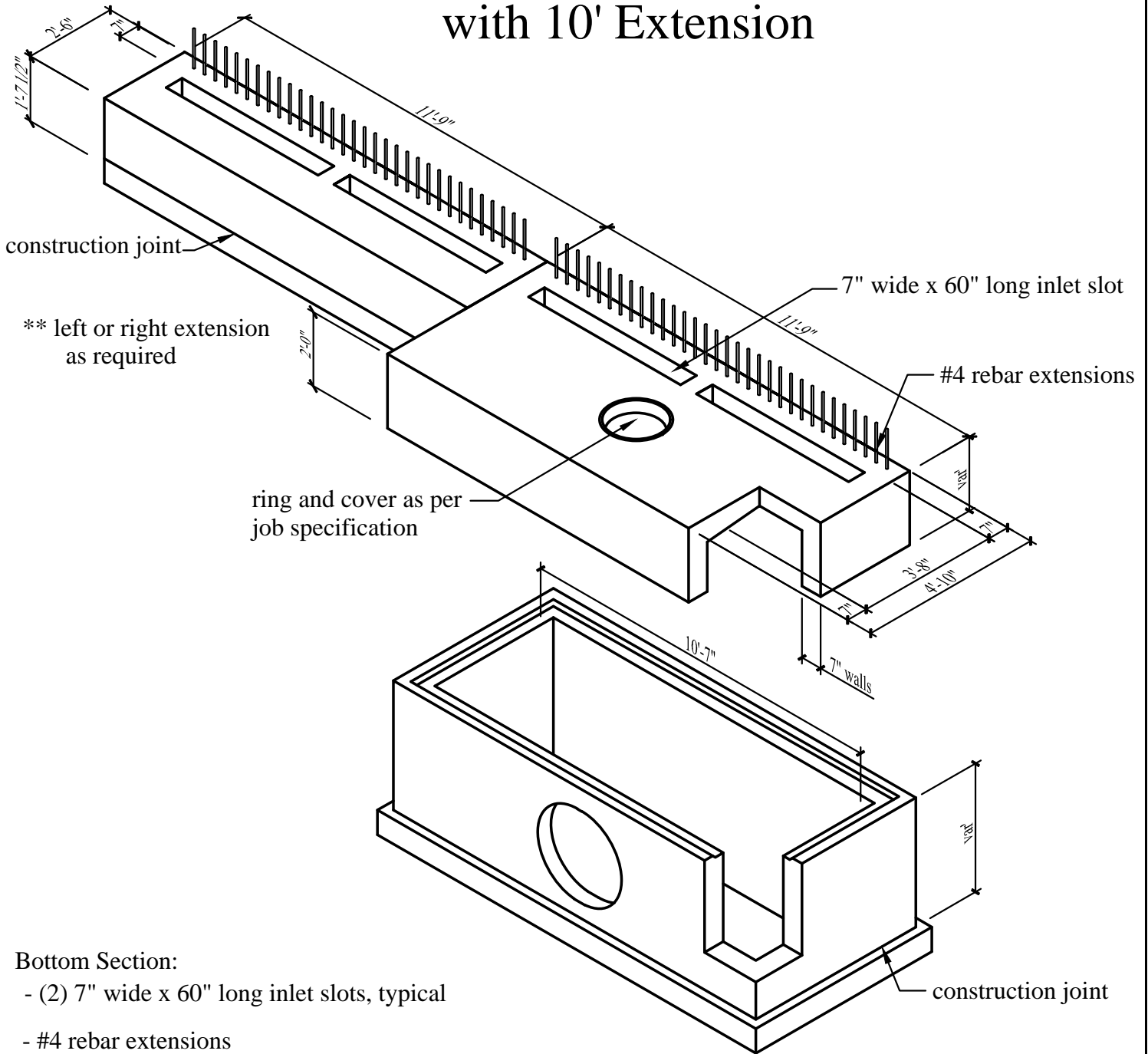


# TxDOT Type C 10'-0" Curb Inlet with 10' Extension



**Bottom Section:**

- (2) 7" wide x 60" long inlet slots, typical
- #4 rebar extensions
- Riser sections available upon request
- Concrete has a 28 day strength of 5,000 psi
- Steel reinforcement is ASTM A615 grade 60
- Load design is H-20

**Notes:**

- Consult manufacturer before handling



**CAPITAL PRECAST, INC.**

6905 SOUTH OLD BASTROP HWY  
SAN MARCOS, TEXAS 78666  
PH. (830) 606-6200

FOR TxDOT Type C 10'-0" Curb Inlet with 10' Extension

JOB

DRAWN	RW	DATE	12/1/2015	Rev. No.	SHEET
-------	----	------	-----------	----------	-------

FILE catalog/curbinlets/10' TxDOT CI Type C with 10' Ext	1 of 1
--	--------